

Corning® X-LAB® System

CORNING



Current cell isolation methods can be labor intensive, highly variable, and lead to poor yields and/or viability. Many of these methods require the usage of chemicals, filters, or other reagents to enable the isolation and harvest of the cells of interest.

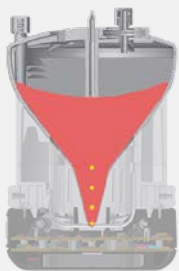
The Corning X-LAB System is designed to separate and harvest a programmable volume of target cell populations from blood and blood products in a closed, sterile device. Customizable process programming, automated separation of samples into three chambers, and highly sensitive infrared sensors for cell separation ensure consistent, reliable, efficient, high-recovery results.

Processing data can be transferred to X-SERIES® DataTrak software to further support GMP processing, monitoring and reporting of information.

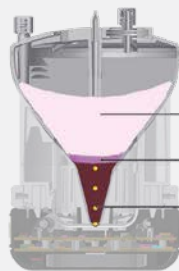
The Corning X-LAB System is a flexible solution for efficient, reliable, and reproducible Ficoll-free recovery of target cell populations from blood and blood products.

- ▶ Automated, functionally closed, sterile system
- ▶ Average processing time of 35 minutes*
*Depending on source material
- ▶ Ficoll-free sedimentation-based harvest
- ▶ Barcode tracking of supplies and process steps electronically
- ▶ Consistent, high recovery (>90%) of viable cells
- ▶ Precise selection of target cells
- ▶ Customized protocols
- ▶ Single-use, disposable cartridge
- ▶ Process 40 mL to 240 mL
- ▶ US class I medical devices
- ▶ Programmable harvest volume of 3 mL to 40 mL

How it Works

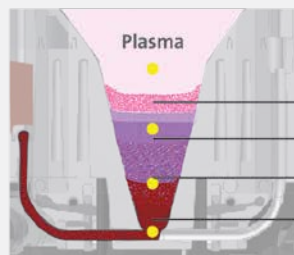


Cartridge with blood in central chamber



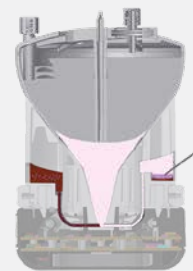
Centrifugation separates cell types by density

Plasma
Nucleated Cells
Red Blood Cells



Red blood cells are transferred to the depletion chamber

Plasma
Platelets
MNCs
Neutrophils
Red Blood Cells



Target cells are isolated in the sterile harvest chamber

MNCs



35-MINUTE PROCESSING TIME



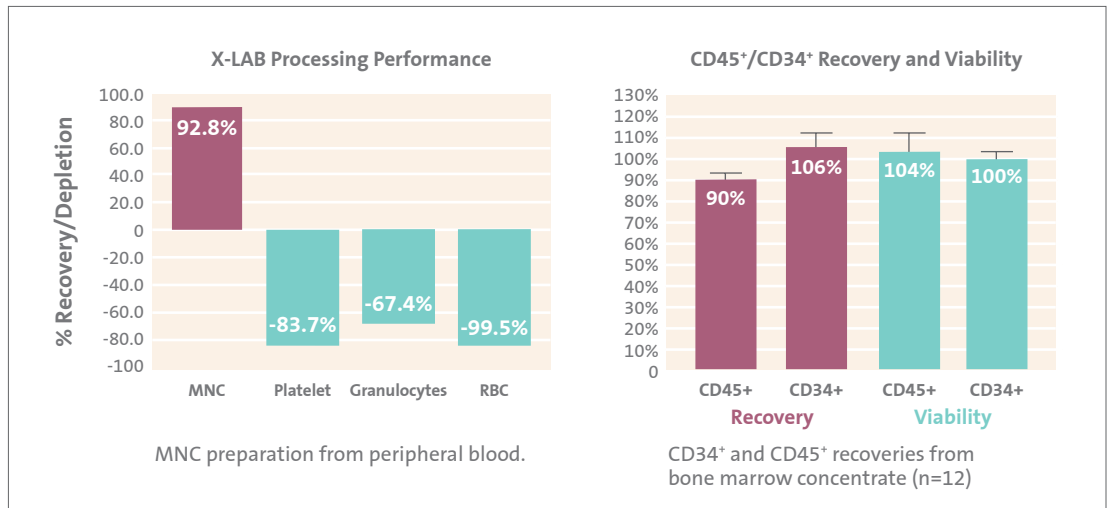
Corning X-LAB control module



Corning X-LAB docking station



Corning X-Counterweights and Corning X-Balance ring kit



Ordering Information

Fisher Scientific Cat. No.	Corning Cat. No.	Description	Qty/Cs
10-320-117	6917	Corning® X-LAB® control module	1
10-320-118	6918	Corning X-LAB docking station	1
10-320-128	6930	X-SERIES® DataTrak software	1
10-320-119	6920	Corning X-Counterweight High	1
10-320-120	6921	Corning X-Counterweight Medium	1
10-320-121	6922	Corning X-Counterweight Low	1
10-320-122	6923	Corning X-Balance ring kit	1
10-320-123	6924	Corning X-LAB disposable cartridges	2
10-320-124	6925	Corning X-LAB disposable cartridges	12
10-320-125	6926	Corning X-LAB disposable cartridges	36

For more specific information on claims, visit the Certificates page at www.corning.com/lifesciences.

Warranty/Disclaimer: Unless otherwise specified, these products are US class I medical devices and medical device accessories, as general purpose laboratory equipment labeled or promoted for a specific medical use. Corning does not make or support any further claim for these products nor does it conduct any further testing to support any other intended use for the product indicated above. Should you decide that you want to use the product for any intended use other than that made by Corning then you accept that Corning does not make or support that claim and that you as the user are responsible for any testing, validation, and/or regulatory submissions that may be required to support the safety and efficacy of your intended application.

CORNING

For a listing of trademarks, visit www.corning.com/clstrademarks. All other trademarks are the property of their respective owners.

Contact us today:

In the United States

Order online: fishersci.com
 Fax an order: 1-800-926-1166
 Call customer service: 1-800-766-7000

In Canada

Order online: fishersci.ca
 Fax an order: 1-800-463-2996
 Call customer service: 1-800-234-7437



part of Thermo Fisher Scientific